

Infrastructural Facilities

The School is housed in an independent premise with laboratories and facilities for all the specializations. The students are encouraged to use the facility for completion of their class assignments and project work. The major Laboratories are listed below.

Geological Museum
Remote Sensing & GIS Facility
Petrology Lab
Geophysics Instruments
Geochemistry Lab

Workshop
Computer Lab
Hydrogeology Lab
WiFi Campus
Internet



Academic Programs Offered

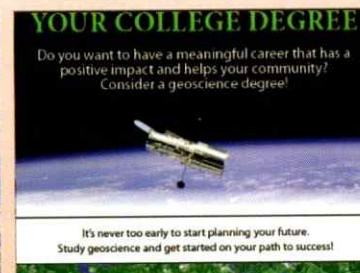
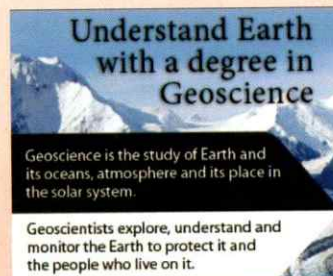
Name of the Programme	Seats
Ph D in Geology	6 per Faculty
M Phil in Geology	10
PG (M Sc in Geology)	16
PG Diploma in	10
• Remote Sensing & GIS	10
• Water Resource Management	10
• Watershed Technology & Management	
Certificate Course in Watershed Technology	10

The admissions to the above courses are on the basis of Entrance Test, and as per the rules laid by Government of Chhattisgarh.

Thrust Areas of Research

Petrology, Geochemistry & Tectonics

Hydrogeology



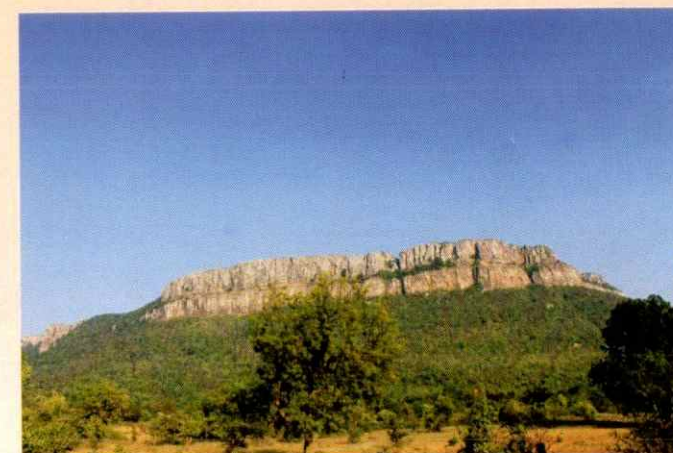
For more information, please contact :
Head, School of Studies in Geology and WRM,
Pt. Ravishankar Shukla University, Amanaka, G.E. Road,
Raipur – 492010 – Chhattisgarh, India.
E-mail: headgeologyrsu@gmail.com Web-site: www.prsu.ac.in

Find us on facebook. Geology@RSU



School of Studies in Geology & WRM

Pt. Ravishankar Shukla University, Raipur



School of Studies in Geology & WRM

Established in 1984

Geology is an attractive subject for those looking to explore their interest in the natural world and society. Geoscientist study the where and why, with focus upon location and interaction across space, and the relationships between human beings and their environment. Geoscientists use geospatial techniques to study the structure of the Earth and its evolution. Geoscientists use practical field skills as well as quantitative and technological abilities to address problems and discover solutions.

Geoscience plays an increasingly important role in our lives because geopolitical, economic, and environmental issues profoundly affect society. Human activities affect Earth's climate and alter planet Earth's terrestrial and aquatic environments. Majoring in Geoscience enables you to study these issues and contribute toward their solution.

Majors in Geoscience enjoy careers in resource exploration, environmental management, planning, GIS, and teaching.

Vision

To provide the highest levels of education through continuous revision and expansion of our educational research, and outreach programs so as to turn out trained, competent geoscientists, academicians and professionals; capable of responding to the needs of the Society.

Mission

To develop in each student, critical thinking, enthusiasm, and the necessary skills to contribute for the betterment of the Society.
Creation and dissemination of new knowledge through scientific research, so as to contribute for the enrichment of Science and Society.

Faculty of School



Dr M W Y Khan, Professor
MSc, PhD

**Mineral Deposits
Geochemistry
Precambrian
Tectonosedimentary
environments.**

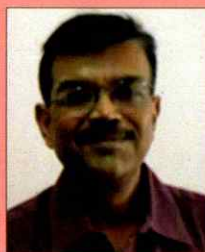
mwykhan@rediffmail.com
9827197331



Dr S K Pande, Professor
MSc, MScTech, PhD

**Geochemistry
Hydrogeology
Remote Sensing**

s.kantp@yahoo.com
9827479377



Dr N Bodhankar, Professor
MTech, MPhil, PhD

**Hydrogeology,
Ground water
recharge &
pollution studies
in karstic terrain**

bninad21@gmail.com
9826515859



Dr K R Hari, Professor
Msc, Mphil, PhD

**Petrology and
Geochemistry.**

krharigeology@gmail.com
9827984622

The faculty members are actively involved in research. The research is aimed at understanding the geology of Central India Craton.

Various Funding Agencies like UGC, CSIR, DST, MOWR, BRNS have supported the School by sanctioning research grants. About sixteen research projects have so far been completed and more than fifty research articles published in National and International Journals.

Research is promoted through MPhil and PhD programmes. The admission is through Entrance Examination. The fields of specialisation available are Igneous & Metamorphic Petrology Sedimentary Petrology, Mineral Exploration & Mineral Deposits Geochemistry and Hydrogeology.