

APPROVED BUILDING PLAN

MAIN DOOR=2.40x2.40-01Nos
 D-1=1.10x2.10-11Nos
 D-2=1.0x2.10-07Nos
 D-3=0.90x2.10-02Nos
 D-4=0.80x2.10-11Nos
 D-5=1.50x2.10-03Nos
 D-6=1.80x2.40-02Nos

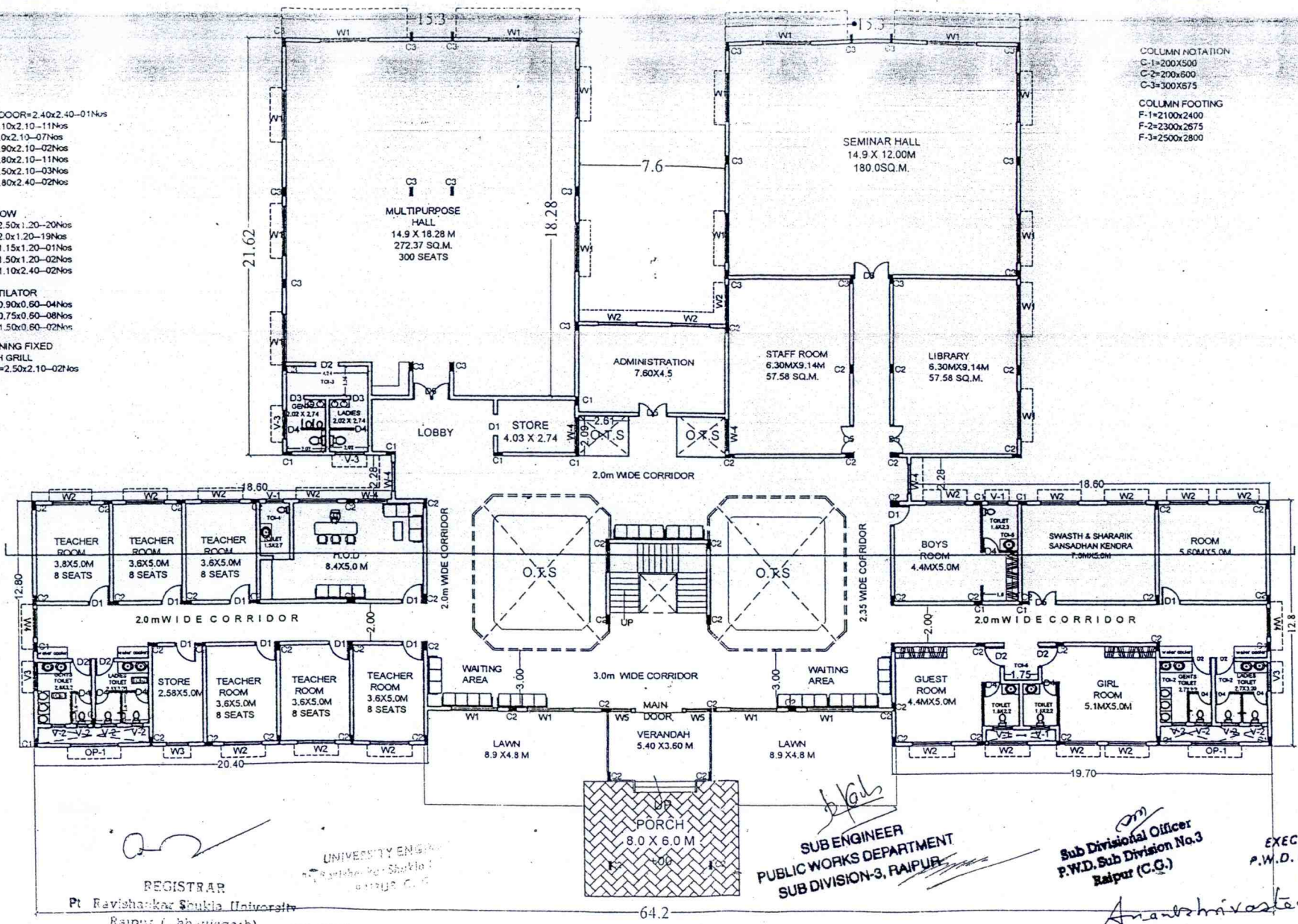
WINDOW
 W-1=2.50x1.20-20Nos
 W-2=2.0x1.20-19Nos
 W-3=1.15x1.20-01Nos
 W-4=1.50x1.20-02Nos
 W-5=1.10x2.40-02Nos

VENTILATOR
 V-1=0.90x0.60-04Nos
 V-2=0.75x0.60-08Nos
 V-3=1.50x0.60-02Nos

OPENING FIXED WITH GRILL
 OP-1=2.50x2.10-02Nos

COLUMN NOTATION
 C-1=200x500
 C-2=200x600
 C-3=300x675

COLUMN FOOTING
 F-1=2100x2400
 F-2=2300x2575
 F-3=2500x2800



REGISTRAR
 Pt. Ravishankar Shukla University
 Raipur (C.Hattisgarh)

UNIVERSITY ENGINEER
 Pt. Ravishankar Shukla University
 Raipur (C.Hattisgarh)

blab
 SUB ENGINEER
 PUBLIC WORKS DEPARTMENT
 SUB DIVISION-3, RAIPUR

Om
 Sub Divisional Officer
 P.W.D. Sub Division No.3
 Raipur (C.G.)

h
 EXECUTIVE ENGINEER,
 P.W.D. Division No.3 Raipur
 (Chhattisgarh)

Anantshrivastav

64.2

PROPOSED PLAN FOR B ED COLLEGE
 BUILDING AT PT. RAVI SHANKER SHUKLA
 UNIVERSITY CAMPUS RAIPUR C.G.

GROUND
 FLOOR PLAN
 WITH COLUMN
 NOTATION

AREA STATEMENT:

BUILT UP AREA	
GROUND FLOOR AREA	= 1412.368sqm
PORCH AREA	= 72.00sqm
FIRST FLOOR AREA	= 1470.75sqm
TOTAL SLAB AREA	= 2991.118 m ²
TOTAL FLOOR DOMESTIC AREA	= 883.318 m ²

REV-DATE 18-10-2014

DRAWN BY TAMEKAR

SHRIVASTAVA, BAGRECHA & ASSOCIATES
 ENGINEER'S ARCHITECTS &
 INTERIOR DESIGNERS
 OFFICE OR RESIDENTIAL: RAIPUR, C.HATTISGARH
 PHONE: 07712111111, 07712111111
 E-MAIL: bagrecha@shrvastava.com
 www.shrvastava.com

APPROVED BUILDING PLAN

MAIN DOOR=2.40x2.40-01Nos
 D-1=1.10x2.10-11Nos
 D-2=1.0x2.10-07Nos
 D-3=0.90x2.10-02Nos
 D-4=0.80x2.10-11Nos
 D-5=1.50x2.10-03Nos
 D-6=1.80x2.40-02Nos

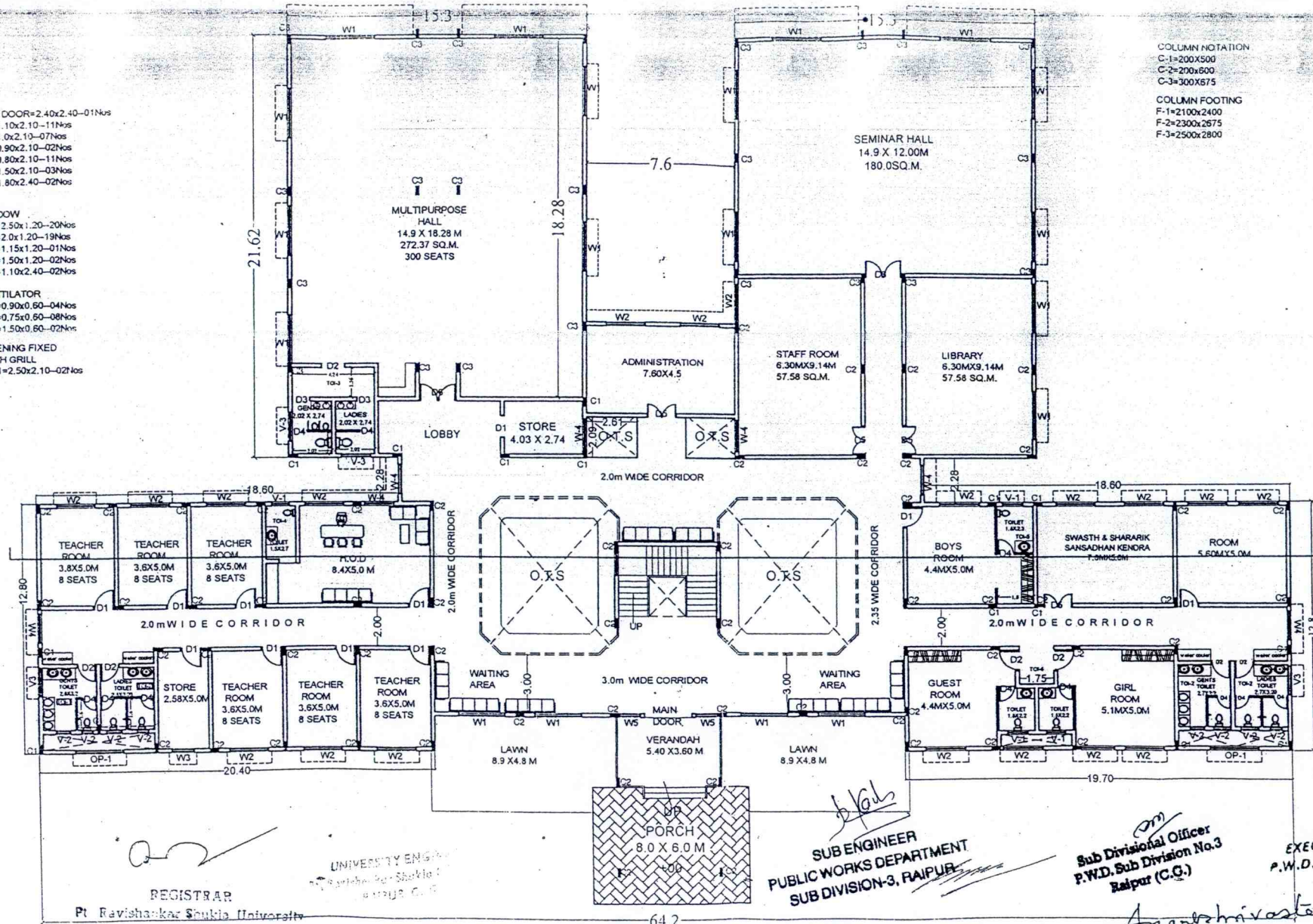
WINDOW
 W-1=2.50x1.20-20Nos
 W-2=2.0x1.20-19Nos
 W-3=1.15x1.20-01Nos
 W-4=1.50x1.20-02Nos
 W-5=1.10x2.40-02Nos

VENTILATOR
 V-1=0.90x0.60-04Nos
 V-2=0.75x0.60-08Nos
 V-3=1.50x0.60-02Nos

OPENING FIXED WITH GRILL
 OP-1=2.50x2.10-02Nos

COLUMN NOTATION
 C-1=200X500
 C-2=200X600
 C-3=300X575

COLUMN FOOTING
 F-1=2100x2400
 F-2=2300x2675
 F-3=2500x2800



REGISTRAR
 Pt. Ravishankar Shukla University
 Raipur (C.G.)

UNIVERSITY ENGINEER
 Pt. Ravishankar Shukla University
 Raipur (C.G.)

SUB ENGINEER
PUBLIC WORKS DEPARTMENT
SUB DIVISION-3, RAIPUR

Sub Divisional Officer
P.W.D. Sub Division No.3
Raipur (C.G.)

EXECUTIVE ENGINEER,
P.W.D. Division No.3 Raipur
(Chhattisgarh)

Anand Shrivastava
SHRIVASTAVA, BAGRECHA & ASSOCIATES
ENGINEER'S ARCHITECTS &
INTERIOR DESIGNERS
 OFFICE DR. RAJESH VERMA, CANAL CROSS, RAIPUR (C.G.)
 RAIPUR (C.G.)
 CONTACT: 9943030303, 9943030303
 www.shrivastavaandbagrecha.com

AREA STATEMENT:	
BUILT UP AREA	1142.368sqm
GROUND FLOOR AREA	1142.368sqm
PORCH AREA	48.00sqm
FIRST FLOOR AREA	1470.735sqm
TOTAL SLAB AREA	2613.103sqm
TOTAL PIPED WORK AREA	3555.00sqm

REV-DATE: 18-10-2014
 DRAWN BY: TANEKAR

PROPOSED PLAN FOR B ED COLLEGE
 BUILDING AT PT. RAVI SHANKER SHUKLA
 UNIVERSITY CAMPUS RAIPUR C.G.

GROUND
 FLOOR PLAN
 WITH COLUMN
 NOTATION